



Ross-Tech-Tip - Does a Generic OBDII Tool Show All Codes?

By Andy Smith, Technical Specialist, Ross-Tech, LLC

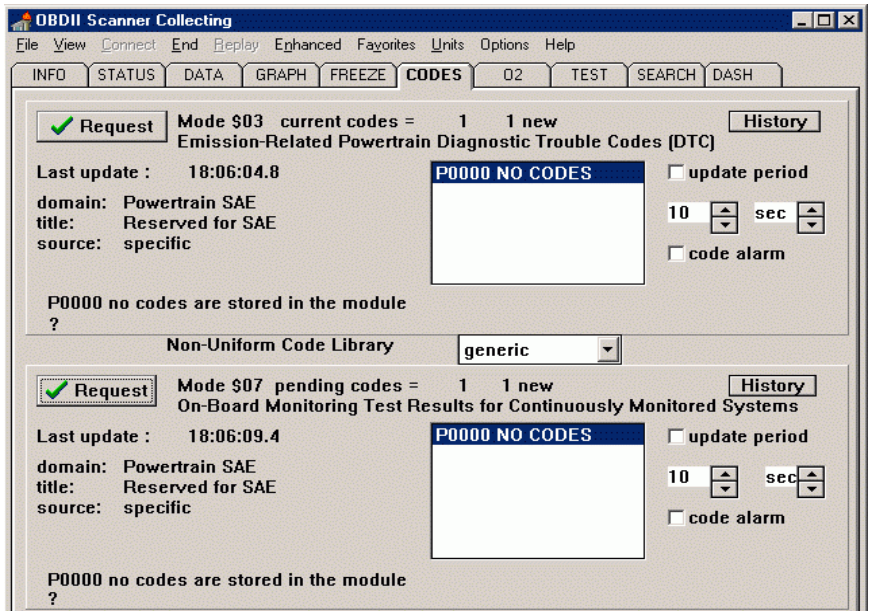
Quite simply, the answer is no. Generic OBDII tools may not give the complete picture of what is happening with a car.

Consider what happened to me with my 2000 VW GTI 1.8T. The car had been intermittently stalling out over a period of a few weeks. The Check Engine Light was not lit. One evening, as I was leaving work, the car stalled again. Fortunately, I had my laptop with me and had several diagnostic programs installed, so I ran a scan. To the right is a screen shot of the report from the OBDII tool.

I draw your attention to the fact that the tool reported “No Codes” — none “Current” and none “Pending”. If that was true, then why was the car stalling? Surely something was not right.

I had access to another OBDII scan program and the next time the car stalled, I ran a scan with it. Unfortunately, it too reported the same “No Codes”.

Finally, I connected the factory level **VAG-COM** tool to my car and the result was drastically different. Ten (10) fault codes were reported by the same ECU on which the generic tools



showed “No Codes”. Checking the wiring diagrams in the factory repair manual from *Bentley Publishers*, I determined that the one thing each of the components showing a “Short to Ground” had in common was the Fuel Pump Relay. Every one of the components gets power from that relay. The next day, I replaced the relay and my GTI intermittent stalling problem was cured.

The Generic Scanners were NOT helpful in finding this problem because the ECU decided the problem was not emissions related. There is no requirement for an ECU to report faults via generic OBDII unless the ECU believes the problem is causing excessive emissions.

VAG-COM is the tool that provides the most complete coverage in the aftermarket for VW/Audi models from 1990–2007. Pro-Kits as shown here start at \$599.

